

“Mining by its nature and scale causes significant changes in the landscape and ecosystem” (Mining Minnesota/Global Minerals Engineering PP)



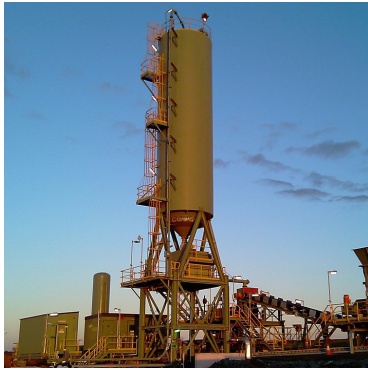
Example of a slurry pipeline



<< Example of an open pit mine



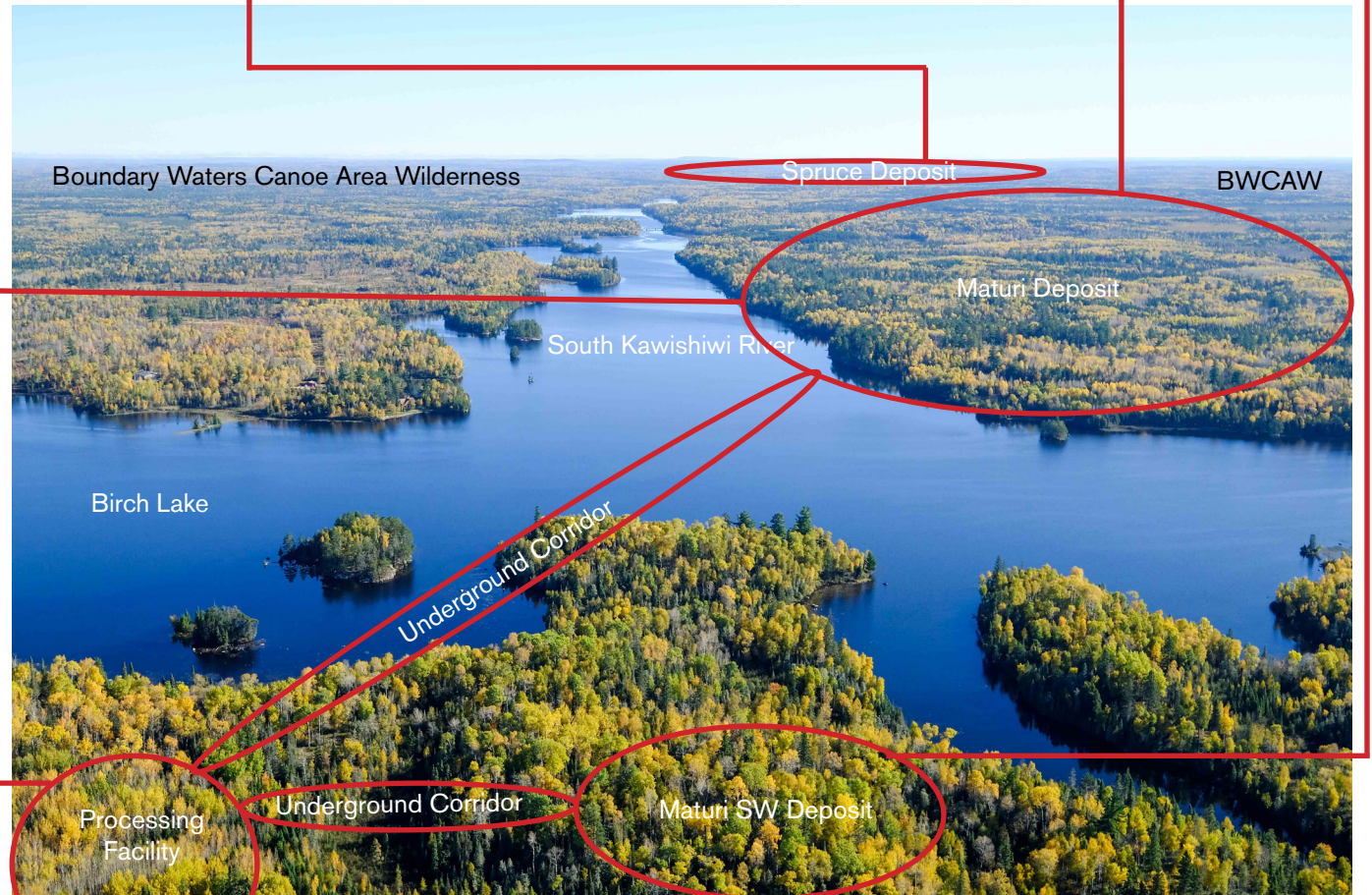
>> Example of a mine ventilation facility for underground mines



Example of a paste plant



Example of a processing facility



Example of a mine ventilator



Example of a sulfur pile



Example of a waste pile



Example of a tailings pile

Lands in the Superior National Forest next to the Boundary Waters Canoe Area Wilderness, America's most visited Wilderness  
A massive sulfide-ore copper mining is proposed here, along the South Kawishiwi River where it flows out of the Wilderness,  
joins Birch Lake, and flows back into the Wilderness



The area contains two popular Wilderness entry points to the Boundary Waters Canoe Area Wilderness (BWCAW). The area also has two popular National Forest campgrounds, hundreds of homes, 28 businesses, a major snowmobile trail, popular hunting area, and one of the most popular fishing chain of lakes in the Superior National Forest.