

# MLSNF R-CAT Maps

## I. Riparian Condition Assessment

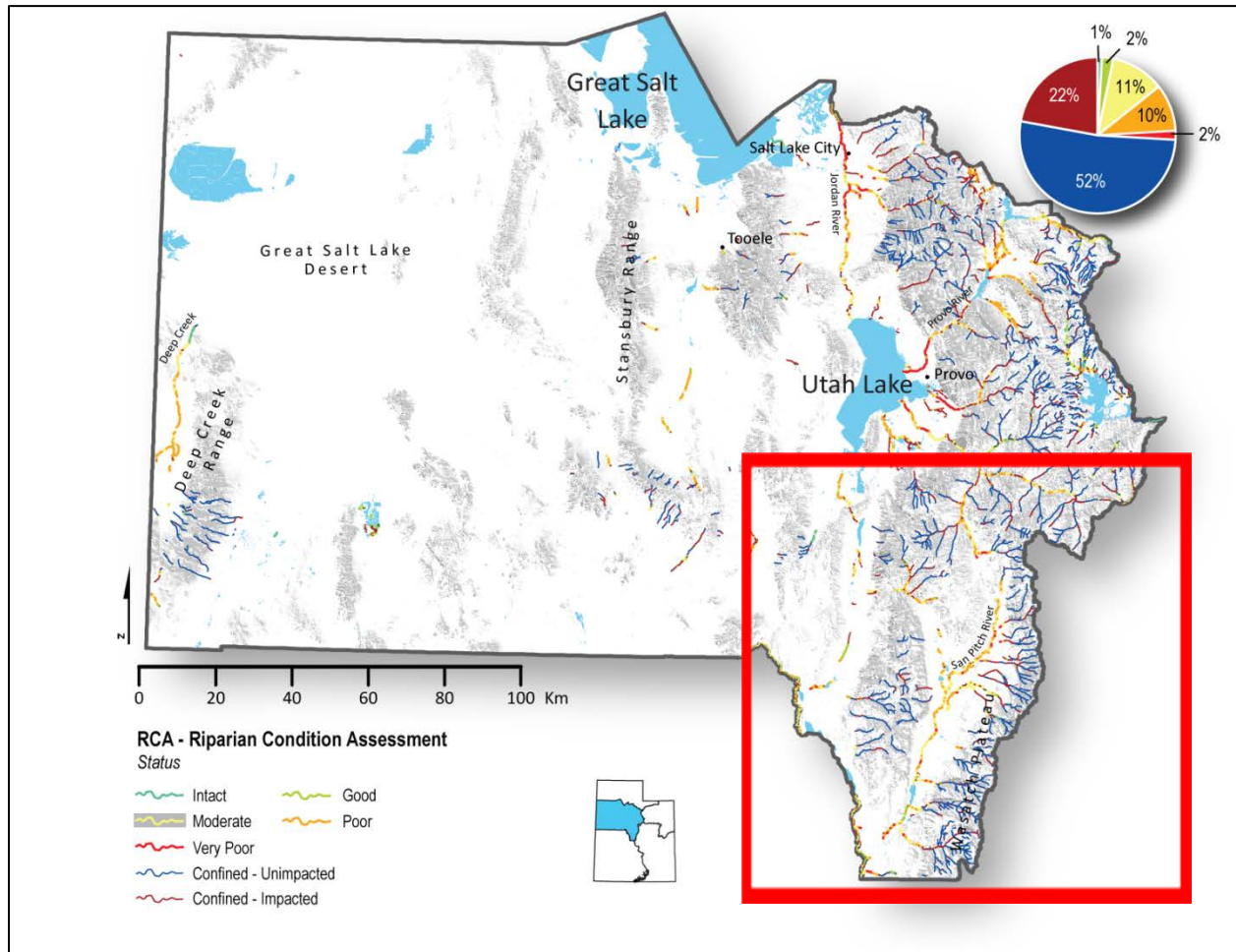


Fig. 1- Riparian Condition Assessment Status, Sanpete and Ferron-Price District areas

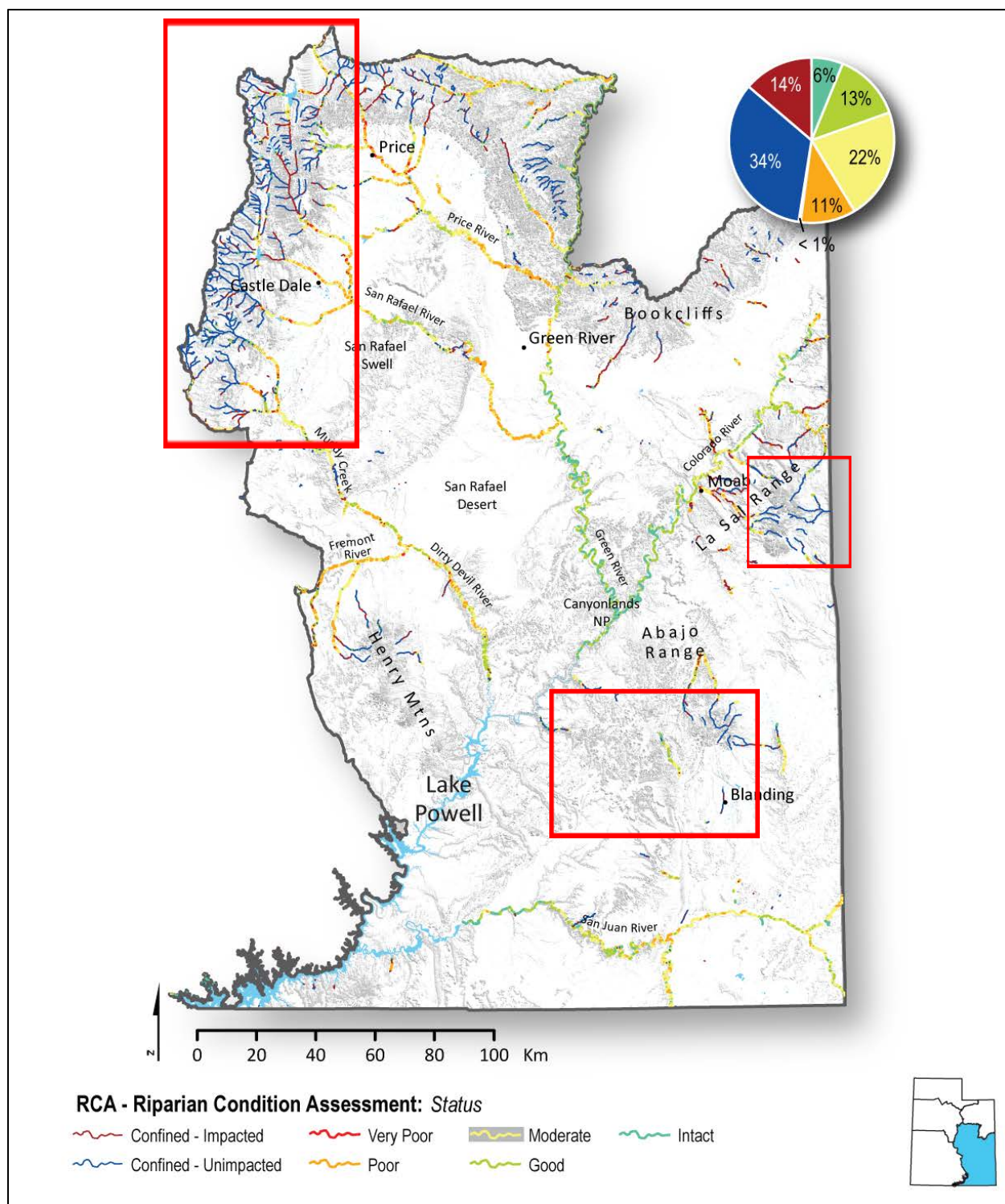


Fig. 2- Riparian Condition Assessment Status, Ferron-Price and Moab-Monticello District areas

## II. Riparian Recovery Potential

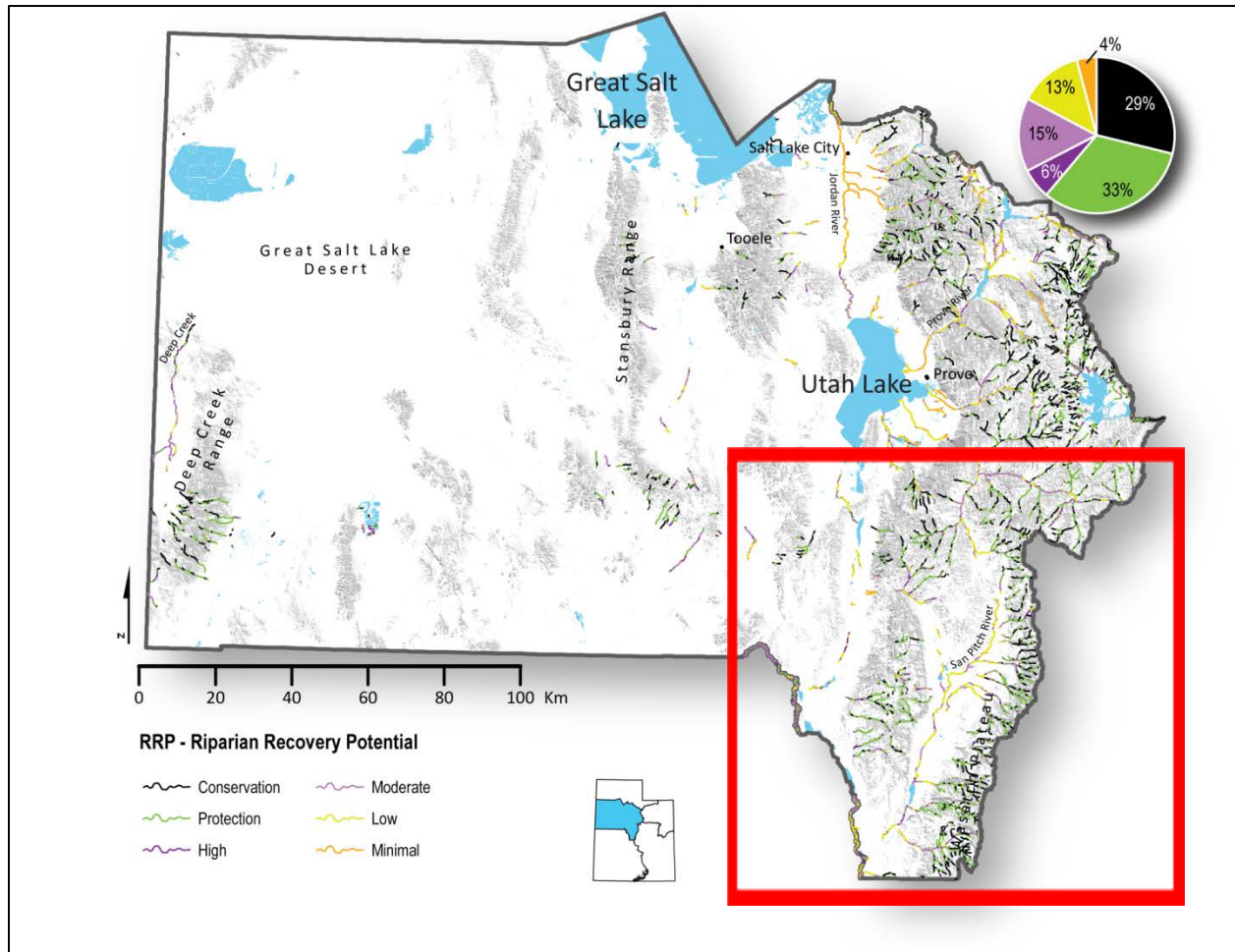


Fig. 3- Riparian Recovery Potential, Sanpete and Ferron-Price District areas



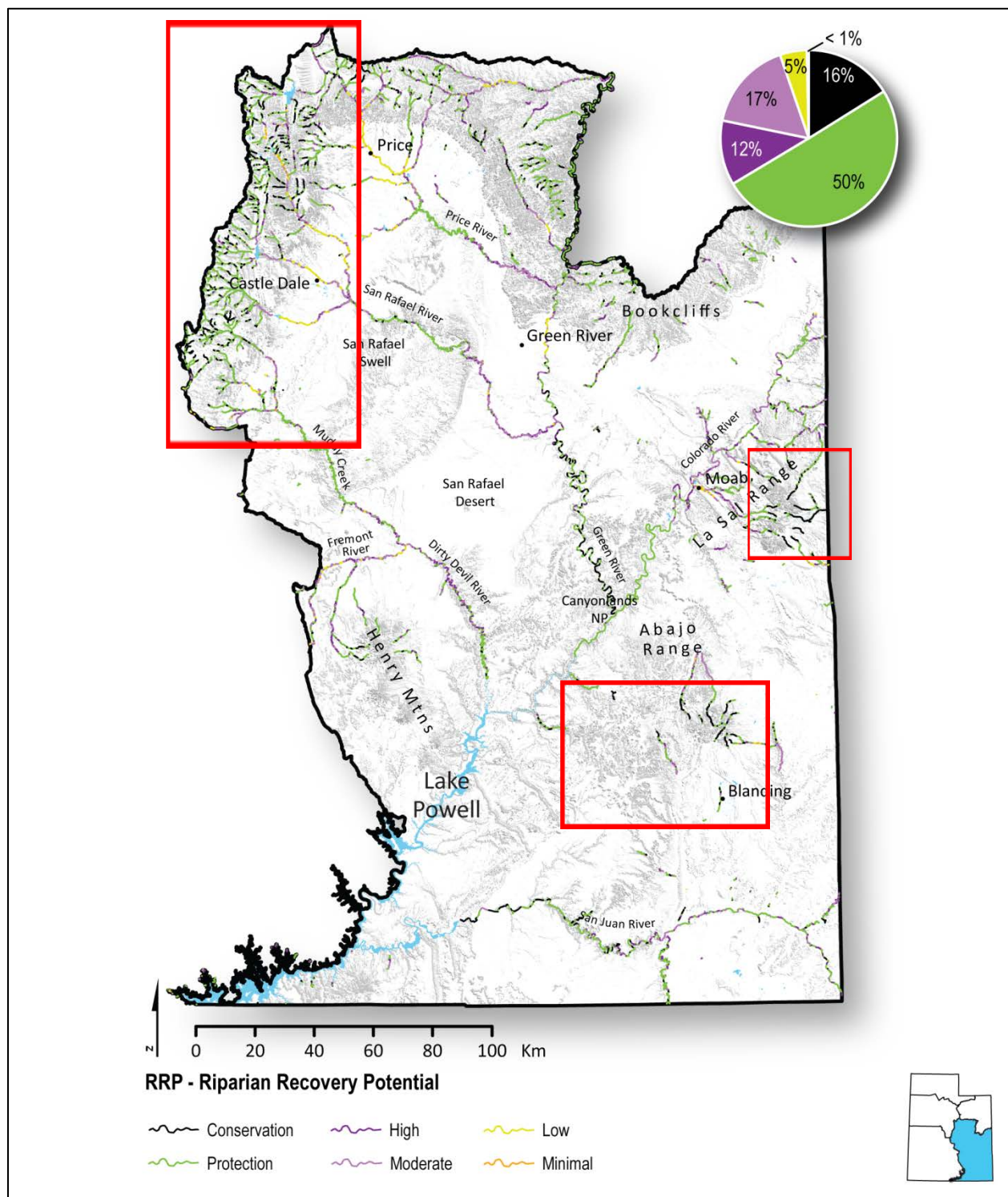


Fig. 4- Riparian Recovery Potential, Ferron-Price and Moab-Monticello District areas

### III. Riparian Vegetation Conversion Type

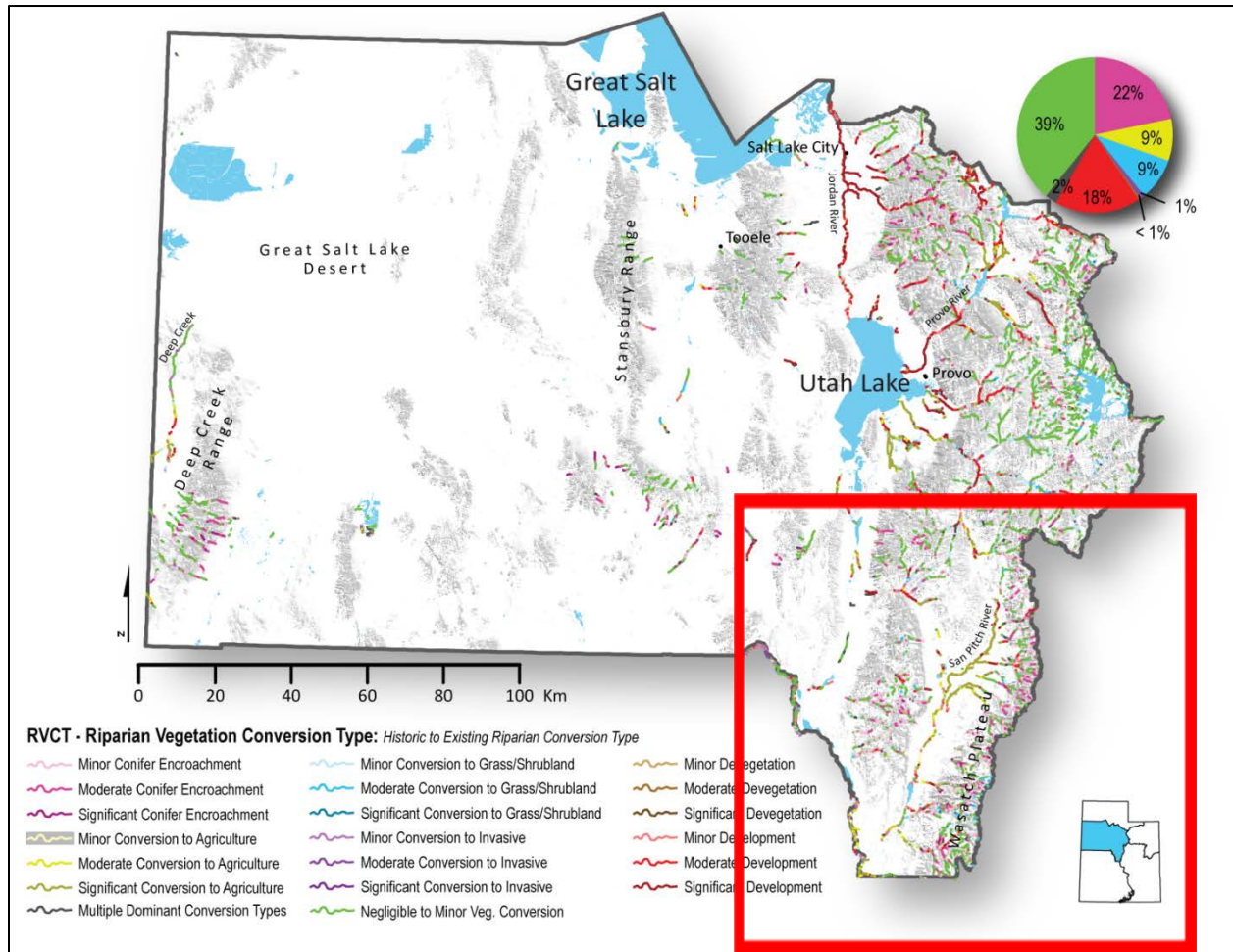


Fig. 5- Riparian Vegetation Conversion Type, Sanpete and Ferron-Price District areas

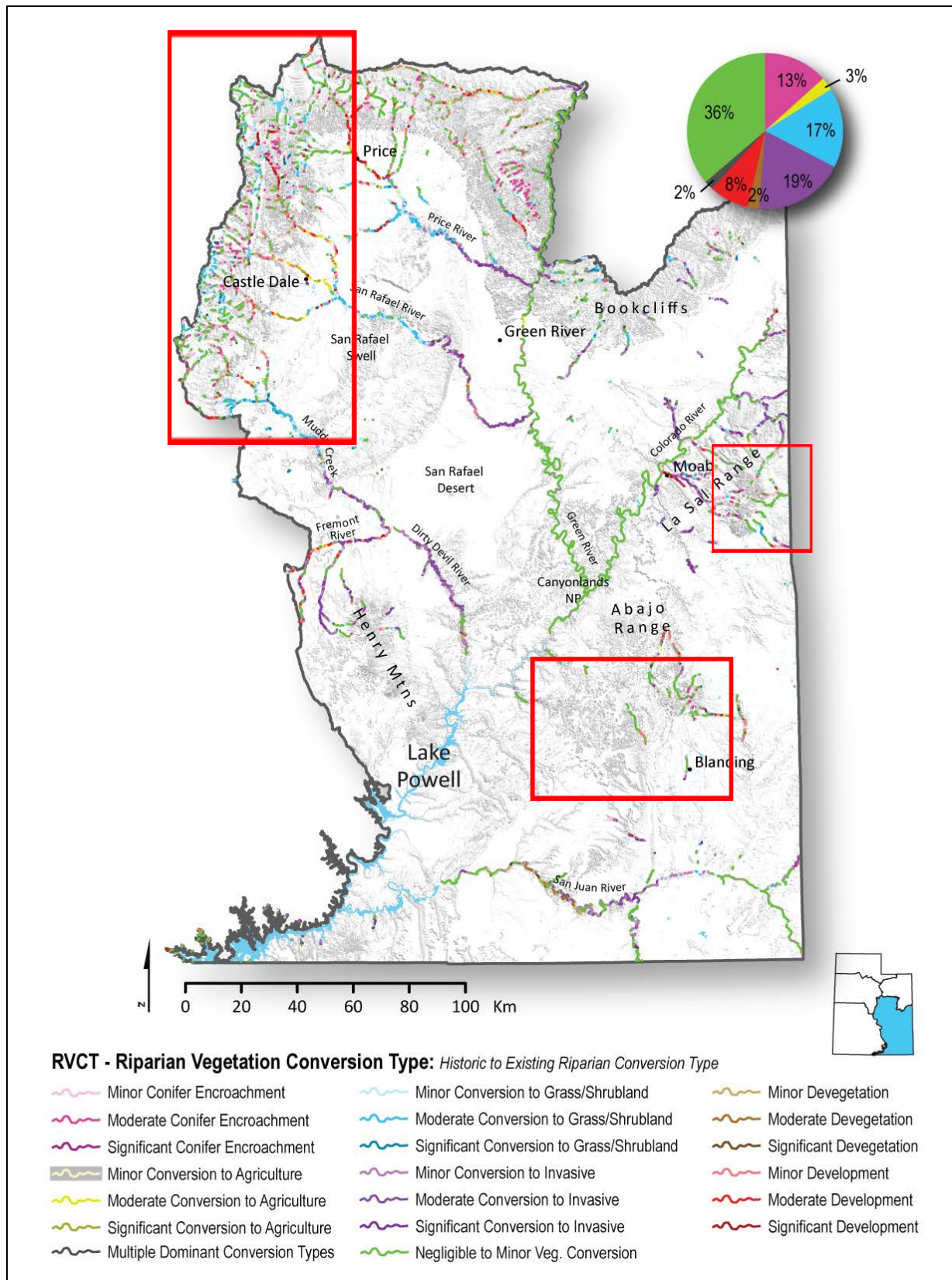


Fig. 6- Riparian Vegetation Conversion Type, Ferron-Price and Moab-Monticello District areas



#### IV. Riparian Vegetation Departure

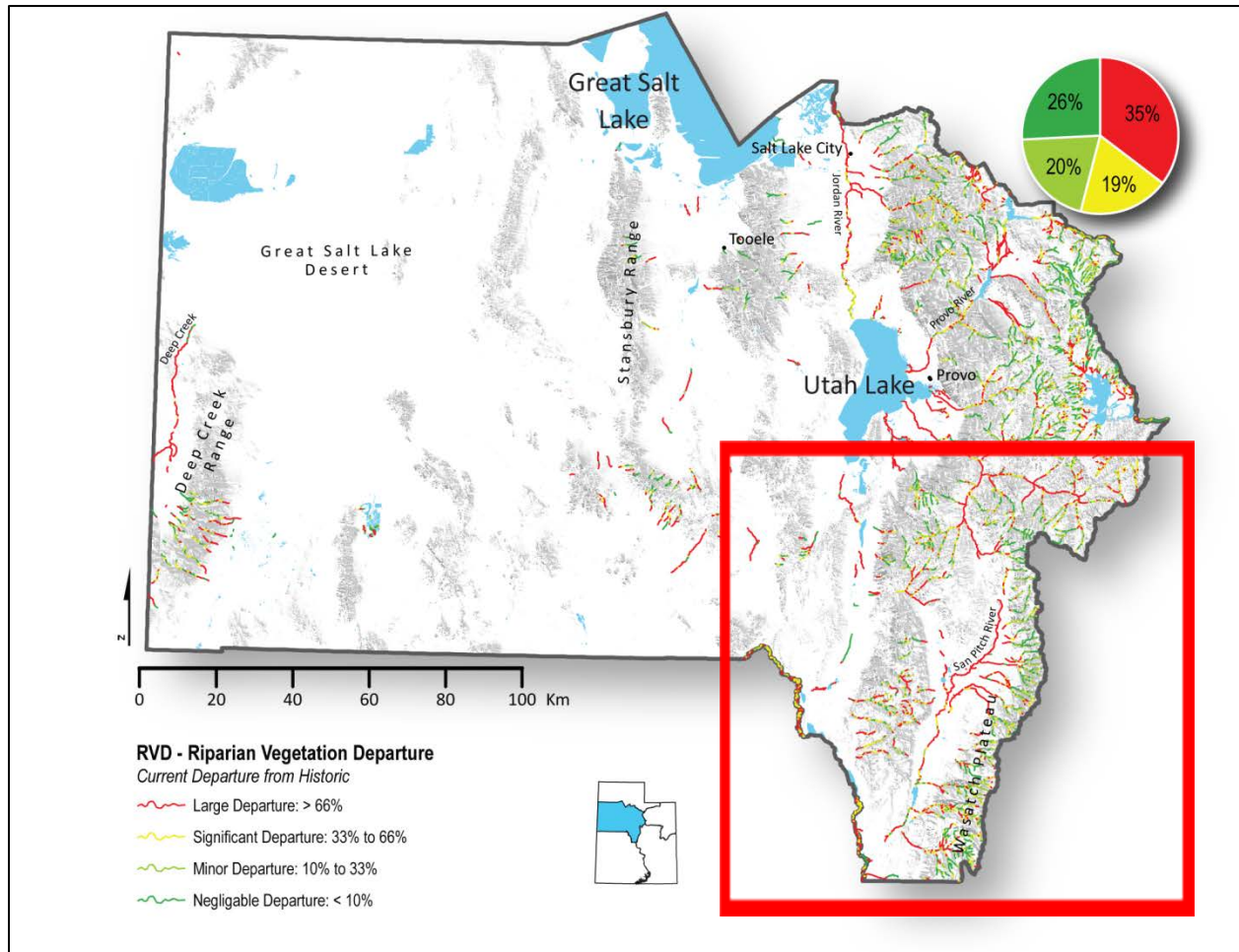


Fig. 7- Riparian Vegetation Departure, Sanpete and Ferron-Price District areas

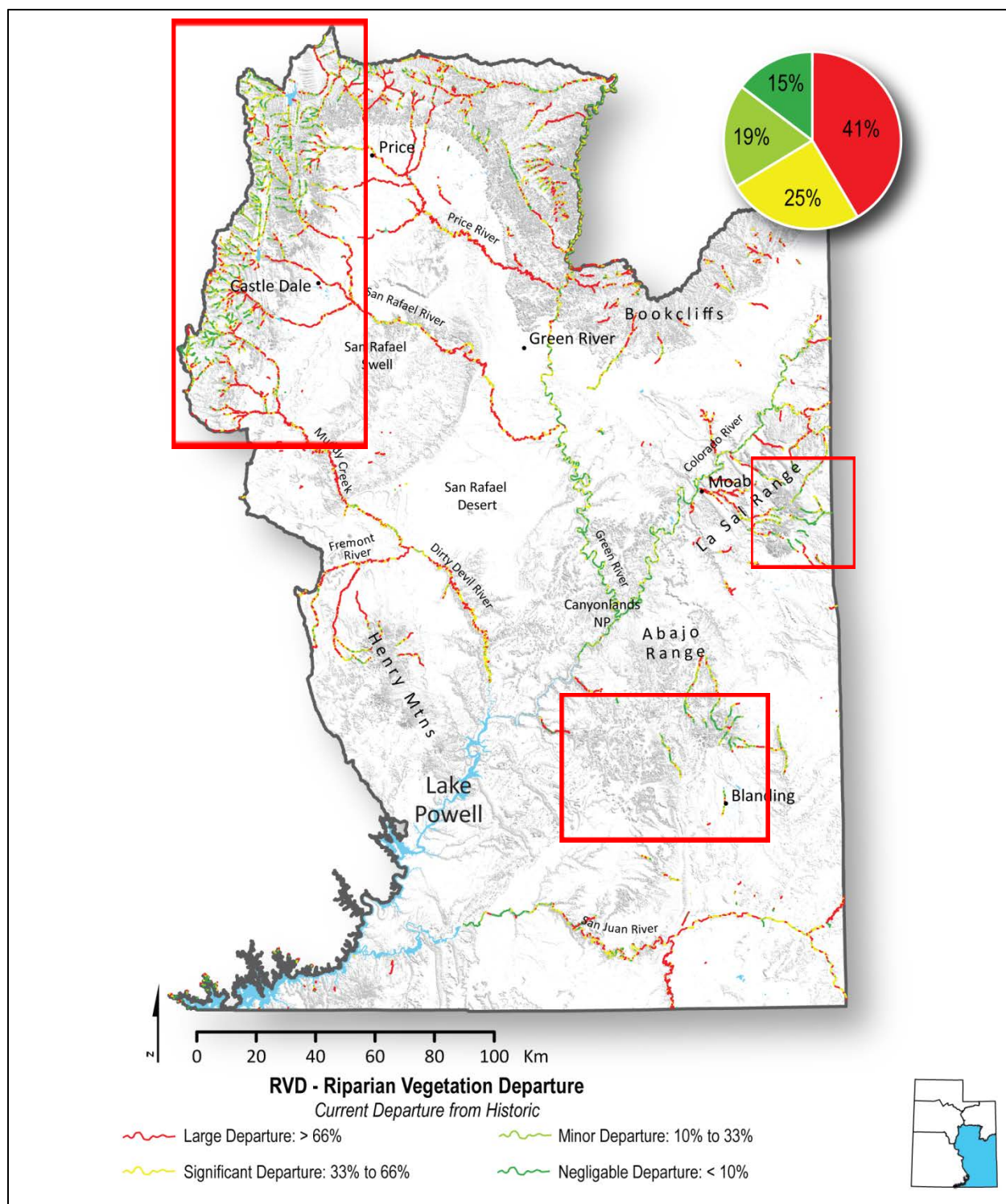


Fig. 8- Riparian Vegetation Departure, Ferron-Price and Moab-Monticello District areas



## V. Valley Bottoms

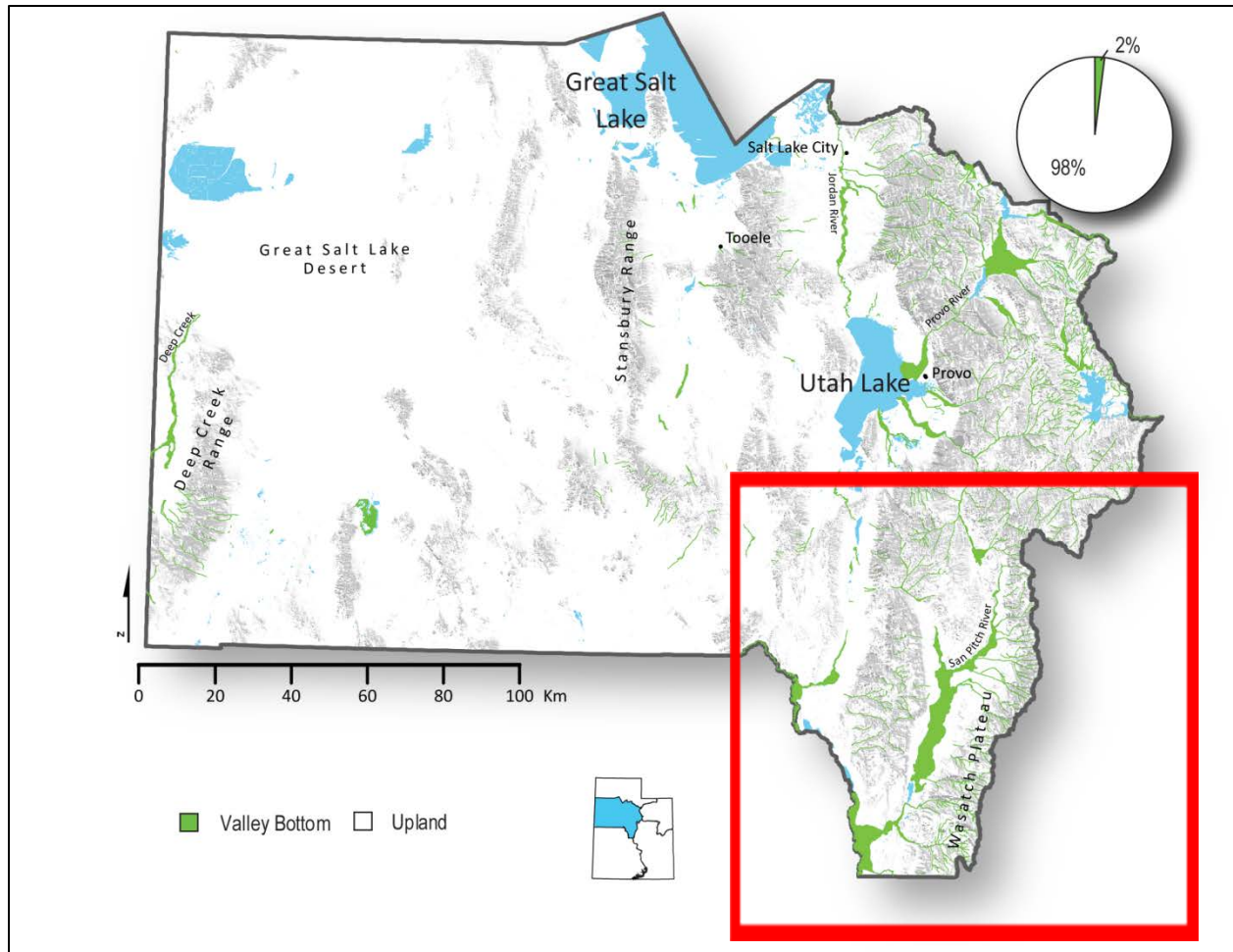


Fig. 9- Valley Bottoms, Sanpete and Ferron-Price District areas

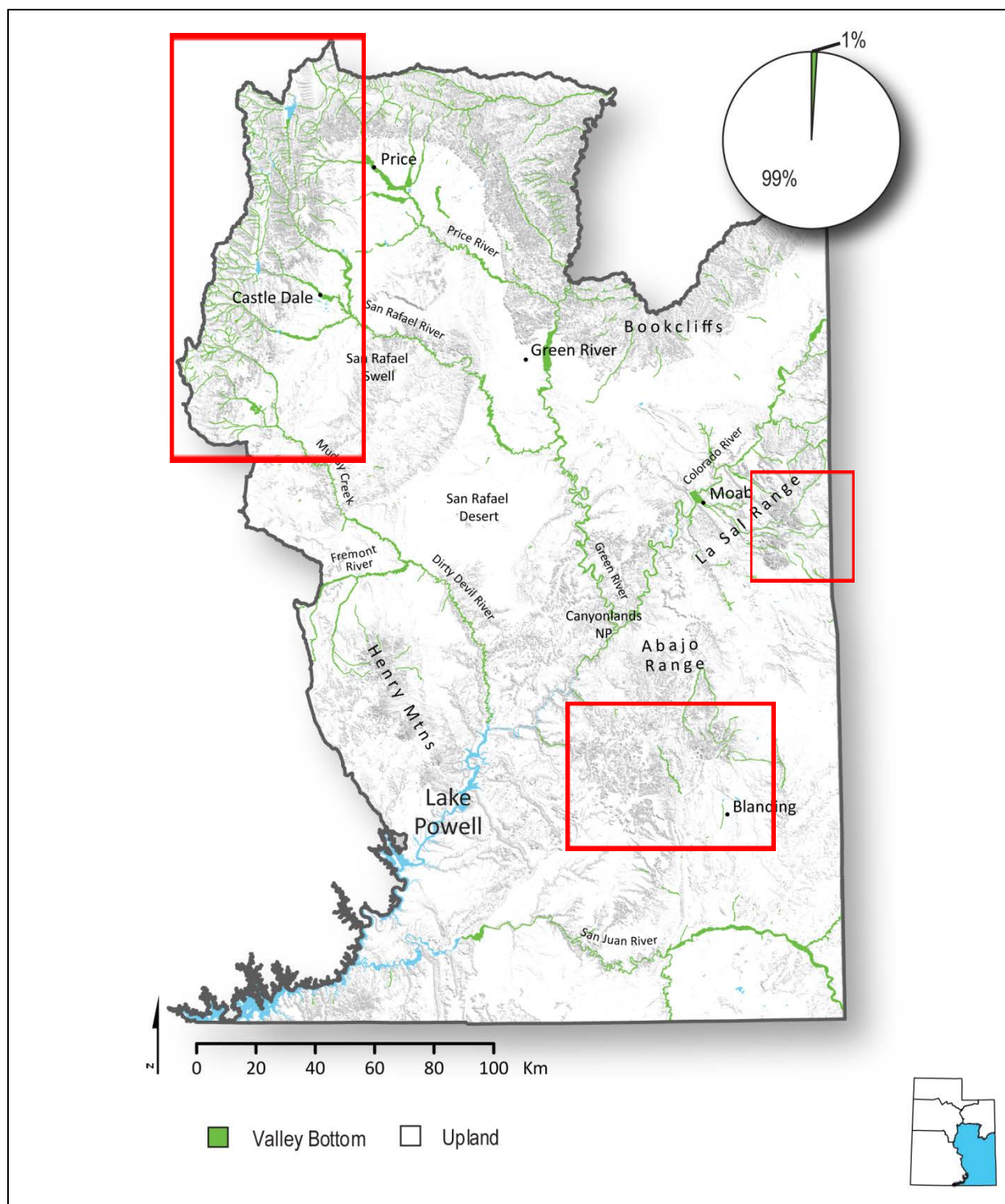


Fig. 10- Valley Bottoms, Ferron-Price and Moab-Monticello District areas